

KEPS TECHNICAL DATA

STRUCTURAL CAPACITY: Conventional methods of calculation for concrete works in buildings as per National Building Code prescriptions and the norm CAN 3-A.23.3M "Calculation for concrete works in buildings"

THICKNESS OF CONCRETE WALL: 16 cm (6-1/4")

PANELS DENSITY: 2 pounds / cubic feet

PANELS THICKNESS: 6,35 cm (2-1/2") and 8,89 cm (3-1/2")

KEPS polystyren panels contain no Chlorofluorocarbon (CFC) and are not toxic.

TYPICAL EXPANDED POLYSTYREN PROPERTIES

Physical properties	Imperial units	IS (metric)	ASTM test method	EPS 2 pnd / c.f.
Thermal resistance R value at 75 (24 C)	h. ft. 2 F Btu 1 inch	m. 2 CC W 25 mm	C177-76 or C 518-76	4.2 min. (0.73 min.)
Thermal dilatation coefficient	inch / inch / F	m. / m. / C	D695	3,5 X 10 (max) (6 X 10 C-1)
Continous temperature range Intermittent temperature range	F F	C C	• •	Up to 167 (75 F) Up to 180 (82,2 C)
Compression resistance (minimum) to 10 % deformation	Pound / inch 2	(K. Pa.)	D 1621-73 1979	30 min. (206 min.)
Deflexion resistance (minimum)	Pound / inch 2	(K. Pa.)	C 203-82	60 min. (410 min.)
Traction resistance (minimum)	Pound / inch 2	(K. Pa.)	D 1623-78	51 min. (360 min.)
Capilarity	•	•	•	None
Water vapour permeability (maximum)	perm. inch	(ng/pa.s.m2)	C 355	1.2 max. (70 max.)
Water absorption % per volume (maximum)	%	%	C 272	1.2 % max.
Dimensionnall stability linear variation in % (max.)	•	•	D2126-75 (Art. 73.5)	0.2 % max.

KEPS WALL PERFORMANCES

Refer to wall composition proposed at detail #1

	Concrete 16 cm (6-1/4") KEPS 6,35 cm (2-1/2")	Concrete 16 cm (6-1/4") KEPS 8,89 cm (3-1/2")
Insulation factor : (R-value per inch = 4.3)	R-24 Total wall	R-32 Total wall
Sound transmission coefficient (FSTC)	63 Total wall	63 Total wall
Fire resistance (minimum)	3 hrs (Concrete only)	3 hrs (Concrete only)

WEIGHT AND VOLUME OF COMPONENTS

	PACK	Cu.ft.	Kilo.	Pound
Panels 2-1/2"	16	11	10.5	23
Arm lock spacers	25	1.7	5.5	11
Base spacers	25	1.8	4.75	9.5
Corners base	25	1.8	4.7	9.5
Standard corners	25	2	7	15
Container (4,500 Sq.ft.)				5,000

An inside vapour barrier is recommended. Outside air barrier is not necessary. Construction details and informations contained in the present document should be evaluated by the building designer considering the specific project to be realized. Duraforme 2000 inc. decline all responsibility regarding the misure of the product.

www.keps.ca

Duraforme 2000 inc.

RBQ : 1624-0723-61

CONTACT US

E-mail info@keps.ca

Phone **450-472-3560**

Fax 450-472-3561

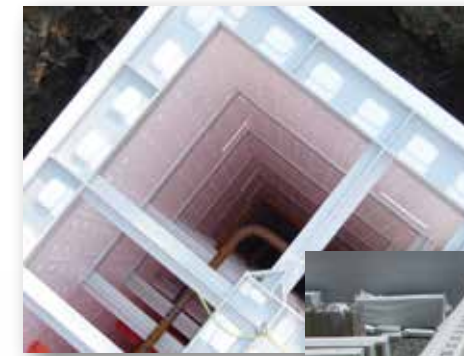
INSULATED CONCRETE FORMS

KEPS

CONCRETE
AT ITS
BEST!



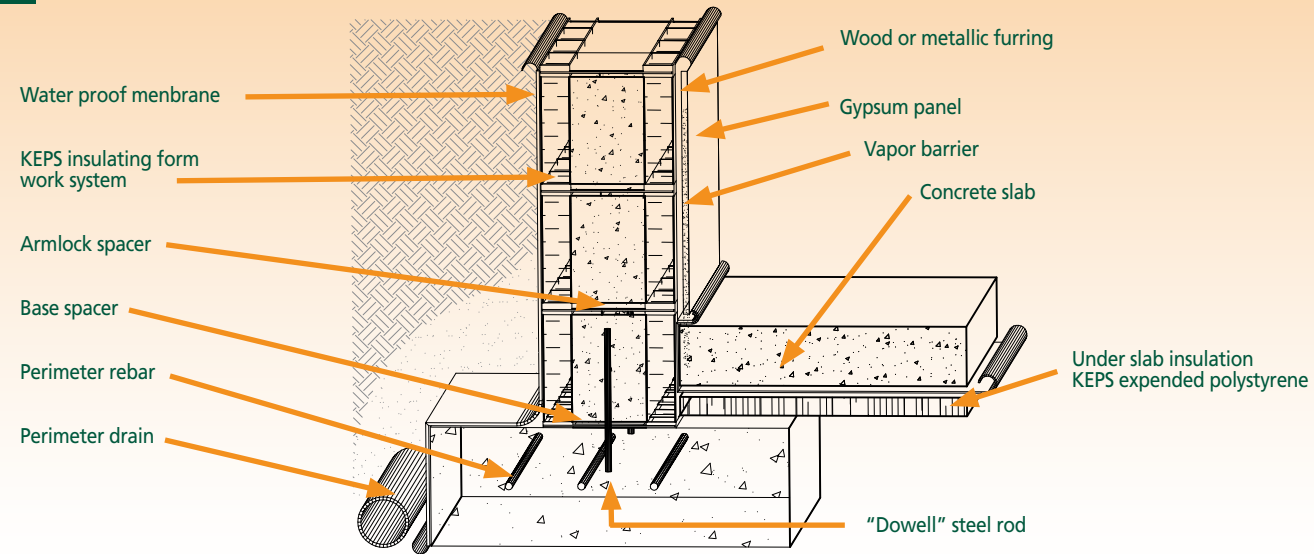
Construction details



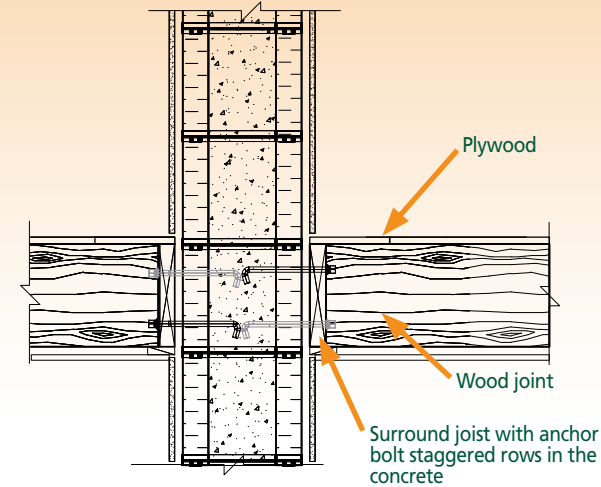
www.keps.ca



1 KEPS FOUNDATION ON FOOTING



6 PARTIAL WALL AND FLOORS ATTACHMENT

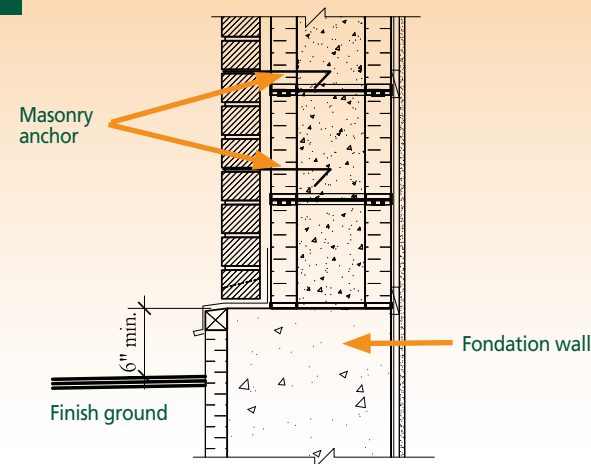


NOTE 1 :

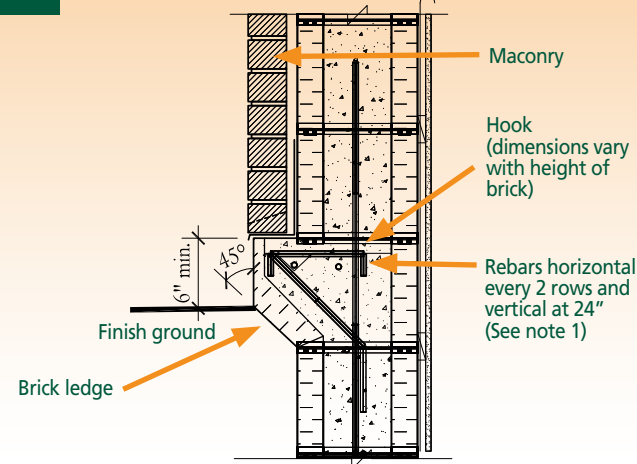
The spacing and diameter of the rebar must respect the recommendations of the structural engineer and depends on the load bearing capacity of the soil.

Please, consult a structural engineer for the requirements of steel reinforcement.

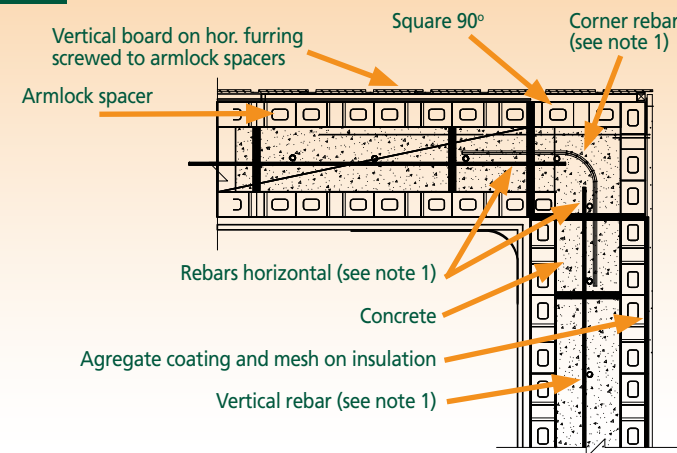
2 MASONRY FINISHING



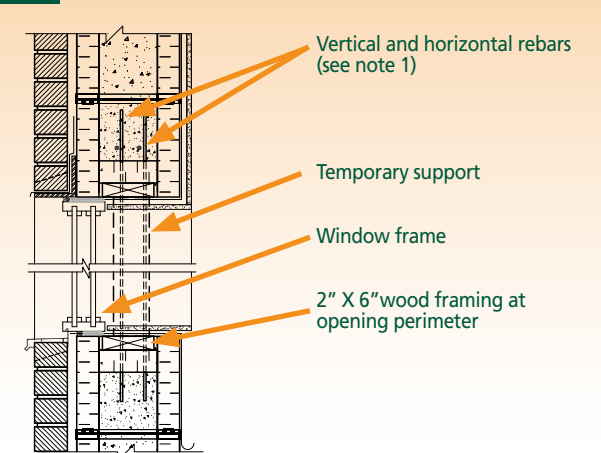
3 KEPS BRICK LEDGE



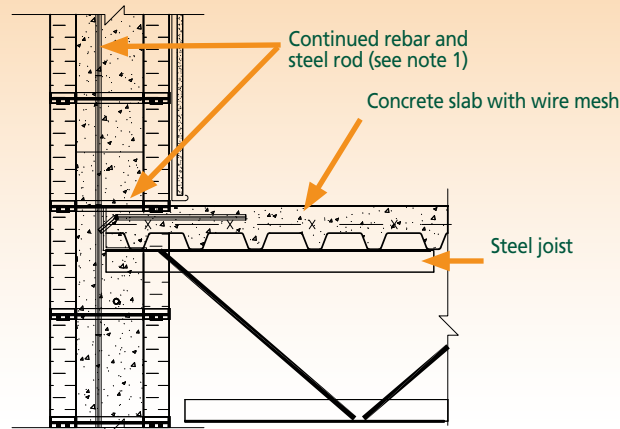
7 KEPS WALL AND FINISHING



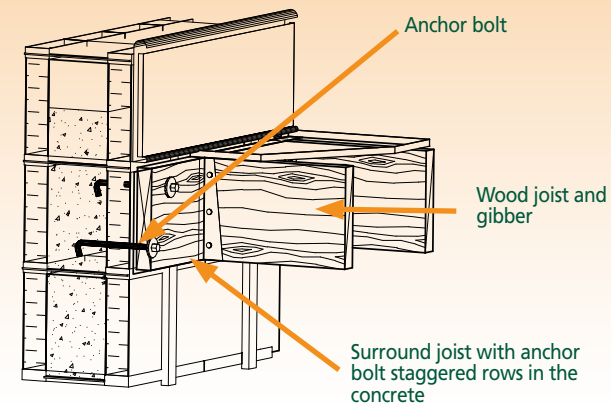
8 OPENING DETAIL



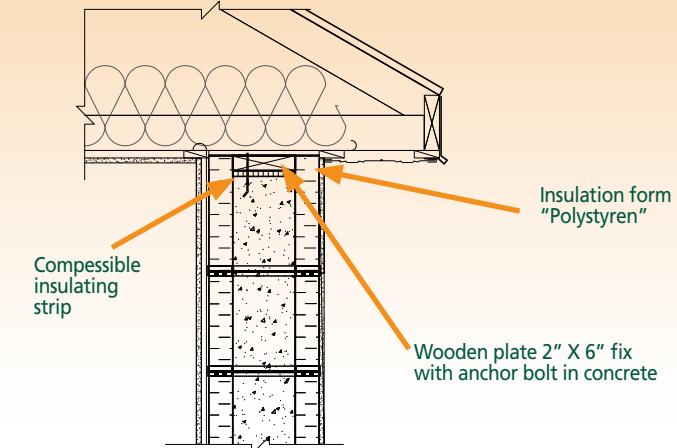
4 STEEL JOIST AND CONCRETE SLAB FLOORING



5 SURROUND JOIST ATTACHMENT



9 ROOF TRUSS FIXING



10 STEEL JOIST FIXING

